



HAVILAH RESOURCES NL

63 Conyngham Street  
Glenside 5065 South Australia  
phone 61 8 8338 9292  
fax 61 8 8338 9293  
email [info@havilah-resources.com.au](mailto:info@havilah-resources.com.au)  
ABN 39 077 435 520

ASX Release

18 July 2008

## **SECOND ROUND DRILLING COMMENCES ON PROSPECT HILL TIN PROJECT**

Havilah Resources NL (Havilah – ASX:HAV) announces that as foreshadowed in an earlier announcement, it has now commenced a 2300 metre RC drilling programme at the Prospect Hill tin project in the northern Flinders Ranges.

The drilling programme is designed to test depth extensions of promising tin intersections reported from Havilah's October 2007 drilling campaign, that included :

**2.5 metres (true width) of 4.85% tin in drillhole PHRC03**

**6.8 metres (true width) of 0.98% tin in drillhole PHRC04**

**Havilah's immediate objective is to outline a tin deposit that is sufficiently large to be exploited by an open pit mining operation.**

Subject to the results of this programme, Havilah will later undertake diamond drilling in order to obtain core samples for further metallurgical testing.

Havilah's Chairman, Dr Bob Johnson, said that Prospect Hill was a strategically important project for Havilah, with tin prices now over US \$23,000 per tonne, and limited immediate prospects for future world supply.

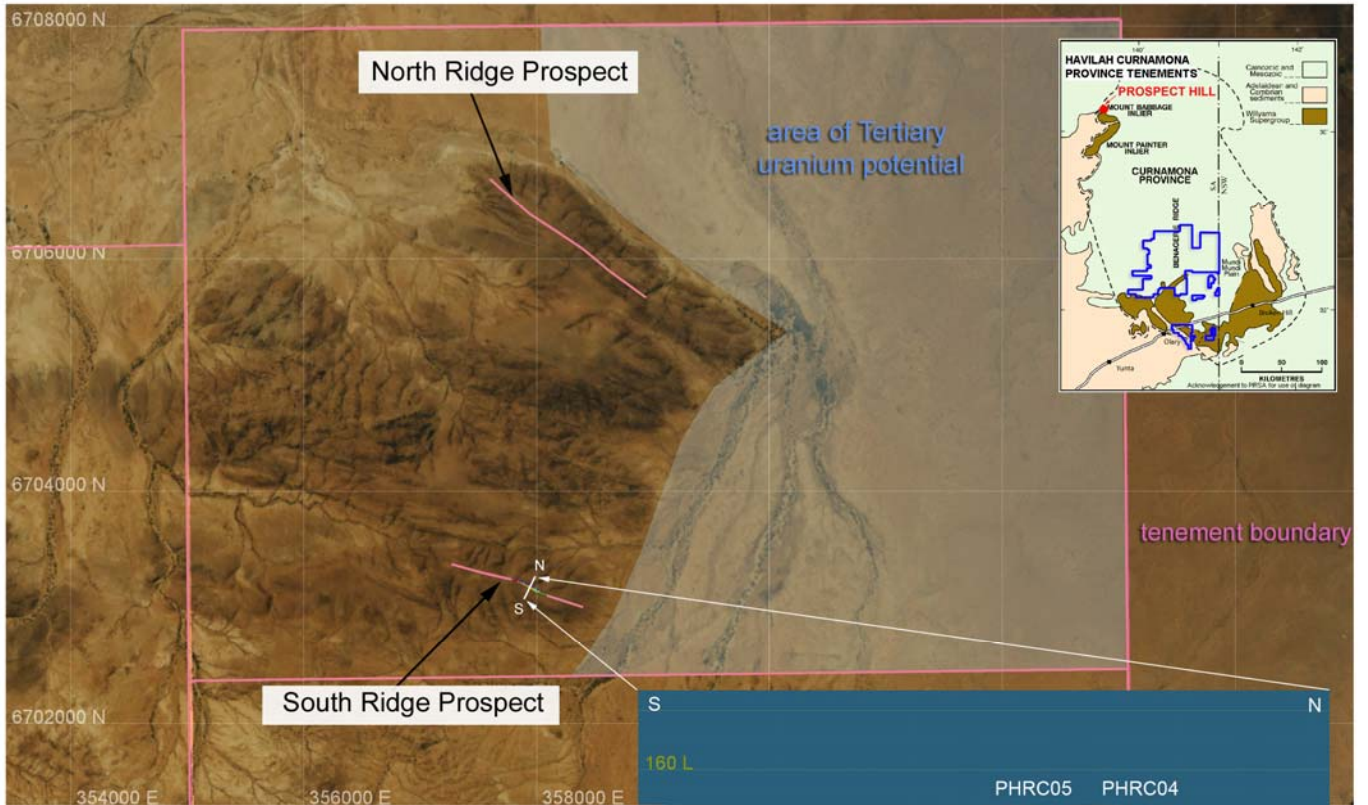
"With comparatively high tin grades, simple metallurgy and a significant tonnage exploitable from the surface in an open pit, even a modest deposit at Prospect Hill could be a very viable proposition. This is especially so with the sealing of the Strzelecki Track which runs within 16 kilometres of the deposit" he said.

With an earlier published inferred resource of 172,000 tonnes of 1.15% tin, Prospect Hill is South Australia's largest currently known tin resource. Havilah may earn up to an 85% interest in the project by completing a feasibility study. Thereafter, the vendors may contribute their 15% share of development costs or revert to a net smelter royalty.

Dr K R Johnson  
CHAIRMAN

The information in this report has been prepared by Dr Bob Johnson who is a member of the Australasian Institute of Mining and Metallurgy and Dr Chris Giles who is a member of The Australian Institute of Geoscientists. Drs Johnson and Giles are employed by the Company on consulting contracts. They have sufficient experience which is relevant to the style of mineralization and type of deposit under consideration to qualify as Competent Persons as defined in the JORC Code 2004. Drs Johnson and Giles consent to the release of the information compiled in this report in the form and context in which it appears.

Enquiries should be directed to Dr Bob Johnson, Chairman, on (08) 83389292



Prospect Hill EL 3605  
Tin and Basemetal Project

November 2007

