



HAVILAH RESOURCES NL

63 Conyngham Street
Glenside 5065 South Australia
phone 61 8 8338 9292
fax 61 8 8338 9293
email info@havilah-resources.com.au
ABN 39 077 435 520

ASX Release

27 September 2007

DRILLING TO COMMENCE ON PROSPECT HILL TIN PROJECT

Havilah Resources NL (Havilah – ASX:HAV) announces that it has entered into a farm-in agreement with the owners of Exploration Licence 3605 centred on Prospect Hill in the northern Flinders Ranges. Havilah may earn up to an 85% interest in the tenement by completing a feasibility study. Thereafter, the vendors may contribute their 15% share of development costs or revert to a net smelter royalty.

EL 3605 contains the **Prospect Hill tin and basemetal project, where previous shallow drilling has established an inferred resource of 172,000 tonnes of 1.15% tin on the South Ridge prospect** (see attached map). The tin mineralization is associated with anomalous copper, zinc, lead, uranium and silver identified along a strike length of more than 1,200 metres.

The North Ridge prospect contains a siliceous lode horizon that can be traced for approximately 2.85 kilometres. This lode system has never been drilled, but **rock chip sampling and trenching returned high levels of copper (up to 15%), gold (up to 5.5 g/t), silver (up to 98 g/t), bismuth (up to 1350 ppm) and tin (up to 1050 ppm to 2080 ppm)..**

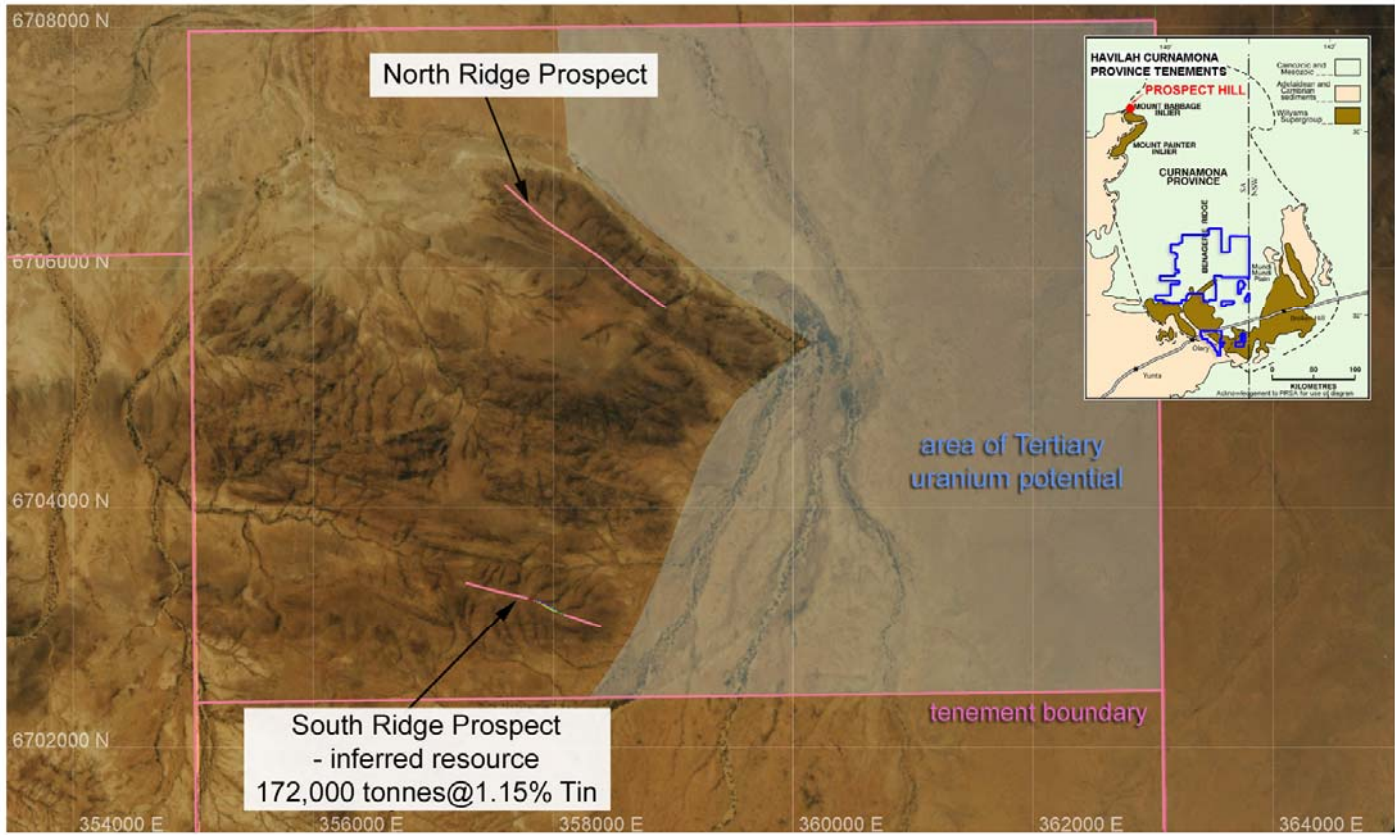
The project, which is **South Australia's largest currently known tin resource**, has lain dormant for more than a decade, and interest has been re-kindled by the current high tin prices. Havilah plans to commence an 1100 metre reverse circulation drilling programme next week that will target depth extensions to the existing tin resource at the South Ridge prospect, and will drill wider lode positions of the North Ridge prospect for the first time.

The eastern portion of EL 3605 also has considerable potential for the discovery of Tertiary palaeochannel hosted uranium deposits, in a geological setting that is very comparable with the Beverley – 4 Mile area that lies roughly 40 kilometres to the south. The key ingredients of suitable sand and gravel beds flanking basement outcrops that are highly elevated in uranium, are known to occur over a large area, and will be targeted in a subsequent drilling programme.

Dr K R Johnson
CHAIRMAN

The information in this report has been prepared by Dr Bob Johnson who is a member of the Australasian Institute of Mining and Metallurgy and Dr Chris Giles who is a member of The Australian Institute of Geoscientists. Drs Johnson and Giles are employed by the Company on consulting contracts. They have sufficient experience which is relevant to the style of mineralization and type of deposit under consideration to qualify as Competent Persons as defined in the JORC Code 2004. Drs Johnson and Giles consent to the release of the information compiled in this report in the form and context in which it appears.

Enquiries should be directed to Dr Bob Johnson, Chairman, on (08) 83389292



Prospect Hill EL 3605
Tin and Basemetal Project



September 2007