



HAVILAH RESOURCES NL

63 Conyngham Street  
Glenside 5065 South Australia  
phone 61 8 8338 9292  
fax 61 8 8338 9293  
email info@havilah-resources.com.au  
ABN 39 077 435 520

ASX Release

10 February 2010

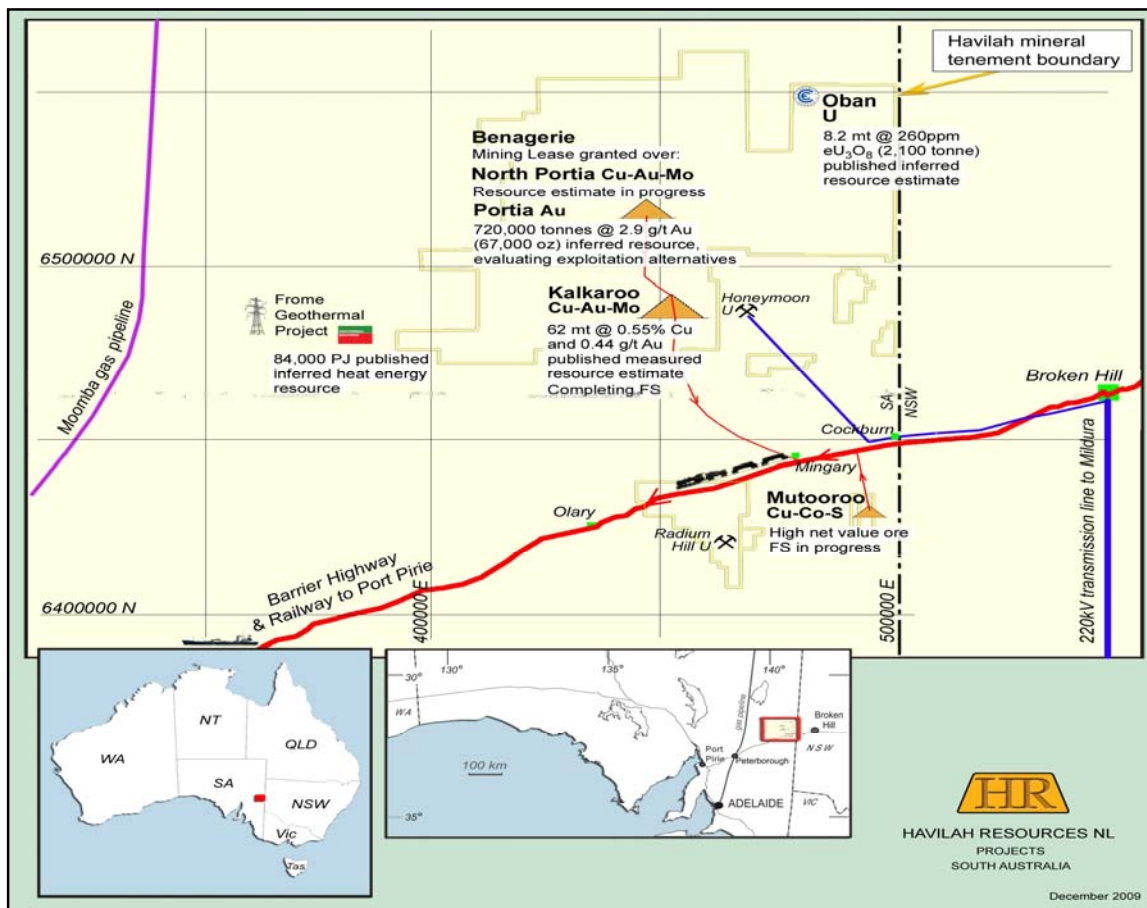
## PLANNED ACTIVITIES FIRST QUARTER 2010

### HIGHLIGHTS

- Kalkaroo feasibility study draft completed.
- First pass costs for Mutooroo ore processing received.
- Best exploitation option for Portia gold being evaluated
- Drilling of Lilydale iron ore project to commence in February.

Against a background of continuing buoyancy in commodity prices, Havilah Resources NL (Havilah – ASX:HAV) plans an active year

balanced between moving its advanced projects towards production and exploring its portfolio of promising prospects.



Havilah's primary objective is to realize the value and exploit the potential of the three mineral deposits it has discovered, namely **Kalkaroo, Mutooroo and Portia**. All projects are potentially attractive propositions at current metal prices. Planned activities in the first quarter of 2010 are summarized below.



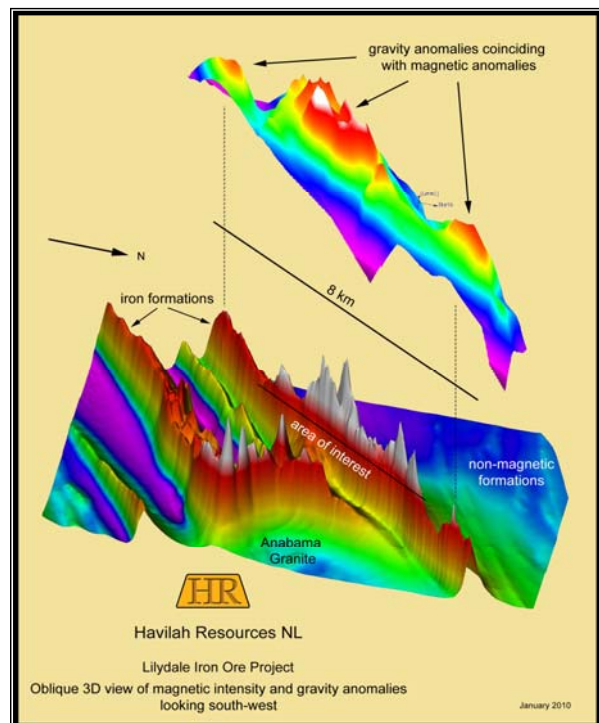
Further information for the **Kalkaroo feasibility study** is presently being compiled incorporating initial comments by partner, Glencore International, on a draft version produced just prior to Christmas. Results of the feasibility study will be released upon finalisation and subject to approval by Glencore.

At **Portia**, a Mining Lease has been offered by PIRSA. Before this can be granted a Mining and Rehabilitation Plan (MARP) must be prepared by Havilah and accepted by PIRSA. This document requires details of mine design and mining methods and engineering design for the gold processing circuit. Havilah is currently evaluating various exploitation alternatives in order to minimize project risk by reducing start up capital costs, specifically concerning removal of overburden. It is planned to complete this work during the first quarter so that the MARP document can then be completed for approval by PIRSA.

At **North Portia**, resource calculations in progress will determine the size and grade of the oxidized copper-gold resource. If viable to mine, this resource could be treated with Kalkaroo ore in the same processing plant, owing to similar nature of the mineralization.

A processing flow sheet and first pass costs for a 500,000 tonne per annum roaster and sulphuric acid plant to treat **Mutooroo ore** has been prepared by an experienced metallurgical consultant. Havilah is now preparing a detailed resource and financial model for Mutooroo in order to determine the best development scenarios. The alternative of producing a copper concentrate via a conventional milling and flotation circuit and stockpiling the sulphide rich tailings for later processing will also be investigated. In the meantime, Havilah will continue to seek a funding partner to assist with development of the project.

The **Lilydale iron ore** project south of Yunta will be drilled in February, once the drill rig returns to site after completion of routine maintenance. Locations for at least ten drillholes have been selected at the peak of the coincident gravity / magnetic anomaly.



Dr K R Johnson  
CHAIRMAN

The information in this report has been compiled by Dr Bob Johnson who is a member of the Australasian Institute of Mining and Metallurgy and Dr Chris Giles who is a member of The Australian Institute of Geoscientists. Drs Johnson and Giles are employed by the Company on consulting contracts. They have sufficient experience which is relevant to the style of mineralisation

and type of deposit under consideration to qualify as Competent Persons as defined in the JORC Code 2004. Drs Johnson and Giles consent to the release of the information compiled in this report in the form and context in which it appears.

Enquiries should be directed to Dr Bob Johnson, Chairman, on (08) 83389292

## Havilah Project Status

