



HAVILAH RESOURCES NL

63 Conyngham Street
Glenside 5065 South Australia
phone 61 8 8338 9292
fax 61 8 8338 9293
email info@havilah-resources.com.au
ABN 39 077 435 520

ASX Release

29 April 2008

PROSPECT HILL TIN PROJECT UPDATE

Havilah Resources NL (Havilah – ASX:HAV) announces that it proposes to carry out a further programme of more than 2000 metres of RC drilling at the Prospect Hill tin project in the northern Flinders Ranges during the next quarter.

The drilling programme is designed to test depth extensions of promising tin intersections reported from Havilah's October 2007 drilling campaign, that included :

2.5 metres (true width) of 4.85% tin in drillhole PHRC03

6.8 metres (true width) of 0.98% tin in drillhole PHRC04

The target objective is a resource of 1 million tonnes of economic grade tin ore that can be exploited by an open pit mining operation.

Preliminary metallurgical test work on three composite RC drill chip samples from Havilah's earlier drilling programme by Burnie Research Laboratory confirmed that the **tin, which is mostly present as free cassiterite grains, can be effectively recovered by gravity methods**. For example, for the high grade composite (4.8% Sn) 84% of the tin reported to a 48% tin concentrate, while for the low grade composite (0.5% Sn) 79% of the tin was recovered into an 8.5% tin concentrate (along with abundant sulphide minerals and garnet). Further metallurgical test work on drill core is planned to determine the optimum tin recovery parameters. This work will also investigate parallel recovery of associated sulphide minerals that contain appreciable copper, lead, zinc and silver.

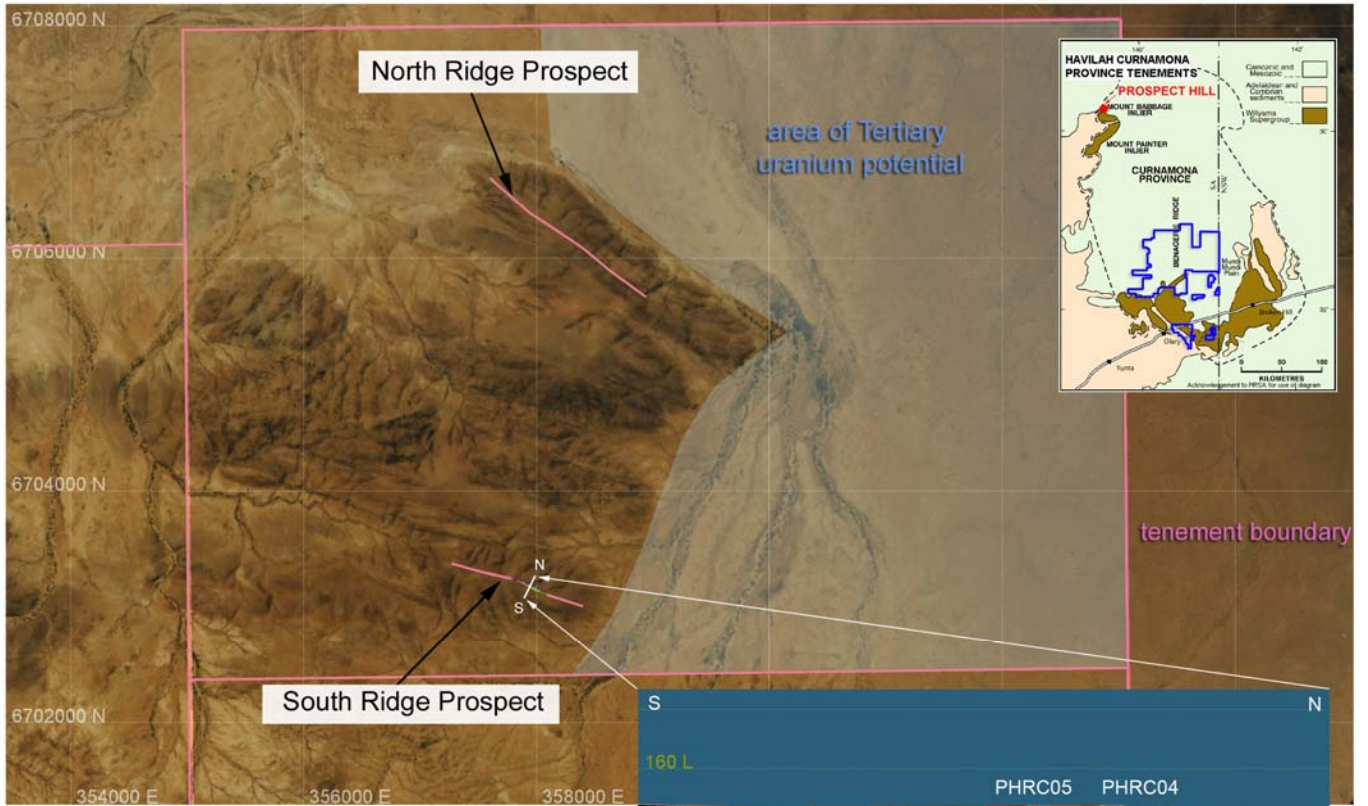
Commenting on the progress so far, Havilah's Chairman, Dr Bob Johnson, said that with tin prices exceeding US \$20,000 per tonne, Prospect Hill's tin resources were already of significant value. "With comparatively high tin grades, simple metallurgy and a significant tonnage exploitable from the surface in an open pit, Prospect Hill has a lot going for it and if we can establish 1 million tonnes of similar grade ore in the next round of drilling it will be a very viable proposition" he said.

With an earlier published inferred resource of 172,000 tonnes of 1.15% tin, Prospect Hill is South Australia's largest currently known tin resource. Havilah may earn up to an 85% interest in the project by completing a feasibility study. Thereafter, the vendors may contribute their 15% share of development costs or revert to a net smelter royalty.

Dr K R Johnson
CHAIRMAN

The information in this report has been prepared by Dr Bob Johnson who is a member of the Australasian Institute of Mining and Metallurgy and Dr Chris Giles who is a member of The Australian Institute of Geoscientists. Drs Johnson and Giles are employed by the Company on consulting contracts. They have sufficient experience which is relevant to the style of mineralization and type of deposit under consideration to qualify as Competent Persons as defined in the JORC Code 2004. Drs Johnson and Giles consent to the release of the information compiled in this report in the form and context in which it appears.

Enquiries should be directed to Dr Bob Johnson, Chairman, on (08) 83389292



Prospect Hill EL 3605
Tin and Basemetal Project

November 2007

