



HAVILAH RESOURCES NL
ABN 45 115 281 144

Prospect Hill Tin Project

Havilah Resources

Havilah Resources NL aims to become a significant producer of copper, gold, cobalt and molybdenum from its 100% owned Kalkaroo, Mutooroo and Benagerie projects, which are at advanced feasibility stage. It holds more than 6,500 km² of surrounding tenements in the highly mineralized Curnamona Province of South Australia, where it maintains an active drilling program. Deposits of iron ore, tin and hard rock uranium have been drilled, with good exploration upside. Havilah owns strategic interests in uranium explorer, Curnamona Energy (45.4%) and hot rock geothermal explorer, Geothermal Resources (58%.)

Issued Capital

82 million ordinary shares
20.495 million listed options
8.925 million unlisted options

Contact

Dr Bob Johnson – Chairman
+ 61 (0)8 83389292

Havilah Resources NL (ASX : HAV) advises that it has now earned a 65% interest in EL 3605 that covers the Prospect Hill tin project, following completion of two earlier drilling programs. Havilah's partners have advised that they will not be contributing to additional drilling expenditure, meaning that Havilah can now earn an 85% interest in the tenement by completing a feasibility study.

Prospect Hill is South Australia's largest known tin deposit, with a published inferred resource of 172,000 tonnes of 1.15% tin. Previous drilling has returned most encouraging hard rock tin intersections over a strike length of more than 1km, including :

2.5 metres (true width) of 4.85% tin in drillhole PHRC03
6.8 metres (true width) of 0.98% tin in drillhole PHRC04

Re-evaluation of the previous exploration data with our joint venture partners, has highlighted several widely scattered as yet undrilled high tin rock chip sample locations. These are now considered to be highly significant in light of a new "roofed tin granite" geological model developed for the area.

The extent of primary hard rock tin occurrences within the exploration licence highlights the potential for significant alluvial tin deposits in water courses draining the bedrock. During the first quarter of 2011, Havilah plans to carry out further testing for both alluvial and hard rock tin in this highly prospective area. Any alluvial tin deposits are likely to be accompanied by rare earth rich accessory heavy minerals that have also shed from the highly rare earth enriched granites in the region.

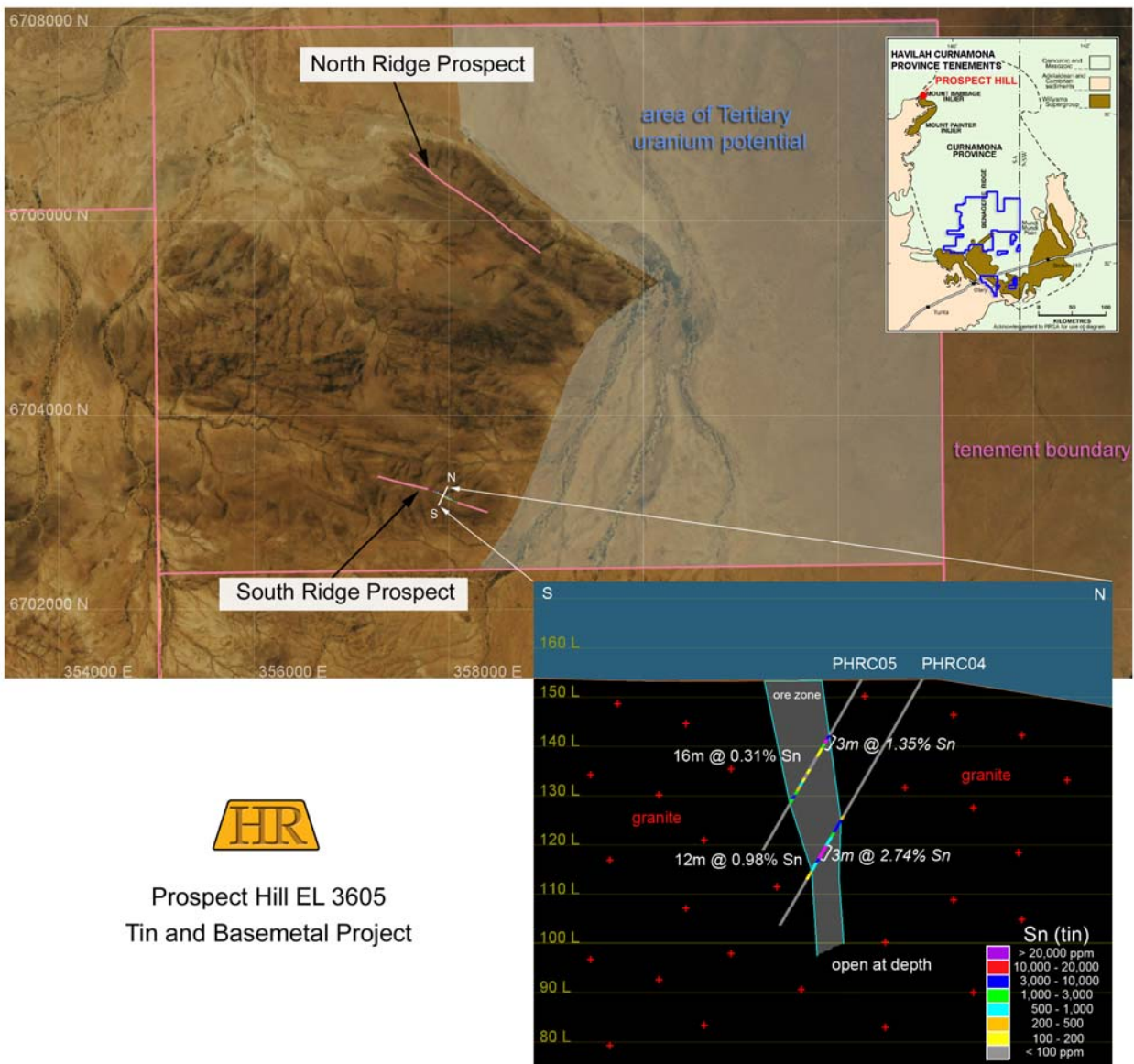


For further information visit the Company website www.havilah-resources.com.au or contact :

Dr Bob Johnson, Chairman, on (08) 83389292 or email : info@havilah-resources.com.au

Competent Persons Statement

The information in this report has been prepared by geologists Dr Bob Johnson, who is a member of the Australasian Institute of Mining and Metallurgy, and Dr Chris Giles who is a member of The Australian Institute of Geoscientists. Drs Johnson and Giles are employed by the Company on consulting contracts. They have sufficient experience which is relevant to the style of mineralization and type of deposit under consideration to qualify as Competent Persons as defined in the JORC Code 2004. Drs Johnson and Giles consent to the release of the information compiled in this report in the form and context in which it appears.



Prospect Hill EL 3605
Tin and Basemetal Project

November 2007