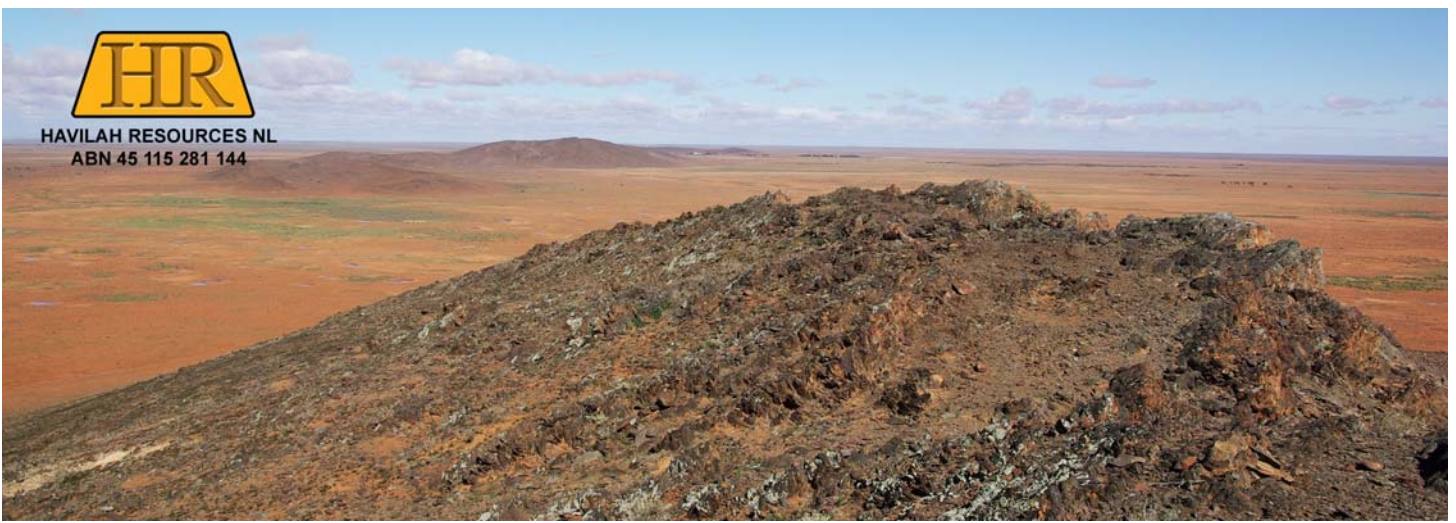




HAVILAH RESOURCES NL
ABN 45 115 281 144



Drilling Commences at Lilydale Iron ore project

Havilah Resources

Havilah Resources NL aims to become a significant producer of copper, gold, cobalt and molybdenum from its 100% owned Kalkaroo, Mutooroo and Benagerie projects, which are at advanced feasibility stage. It holds more than 6,500 km² of surrounding tenements in the highly mineralized Curnamona Province of South Australia, where it maintains an active drilling program. Deposits of iron ore, tin and hard rock uranium have been drilled, with good exploration upside. Havilah owns strategic interests in uranium explorer, Curnamona Energy Limited (45.4%) and hot rock geothermal explorer, Geothermal Resources Limited (58%.)

Issued Capital

82 million ordinary shares
8.58 million unlisted options

Contact

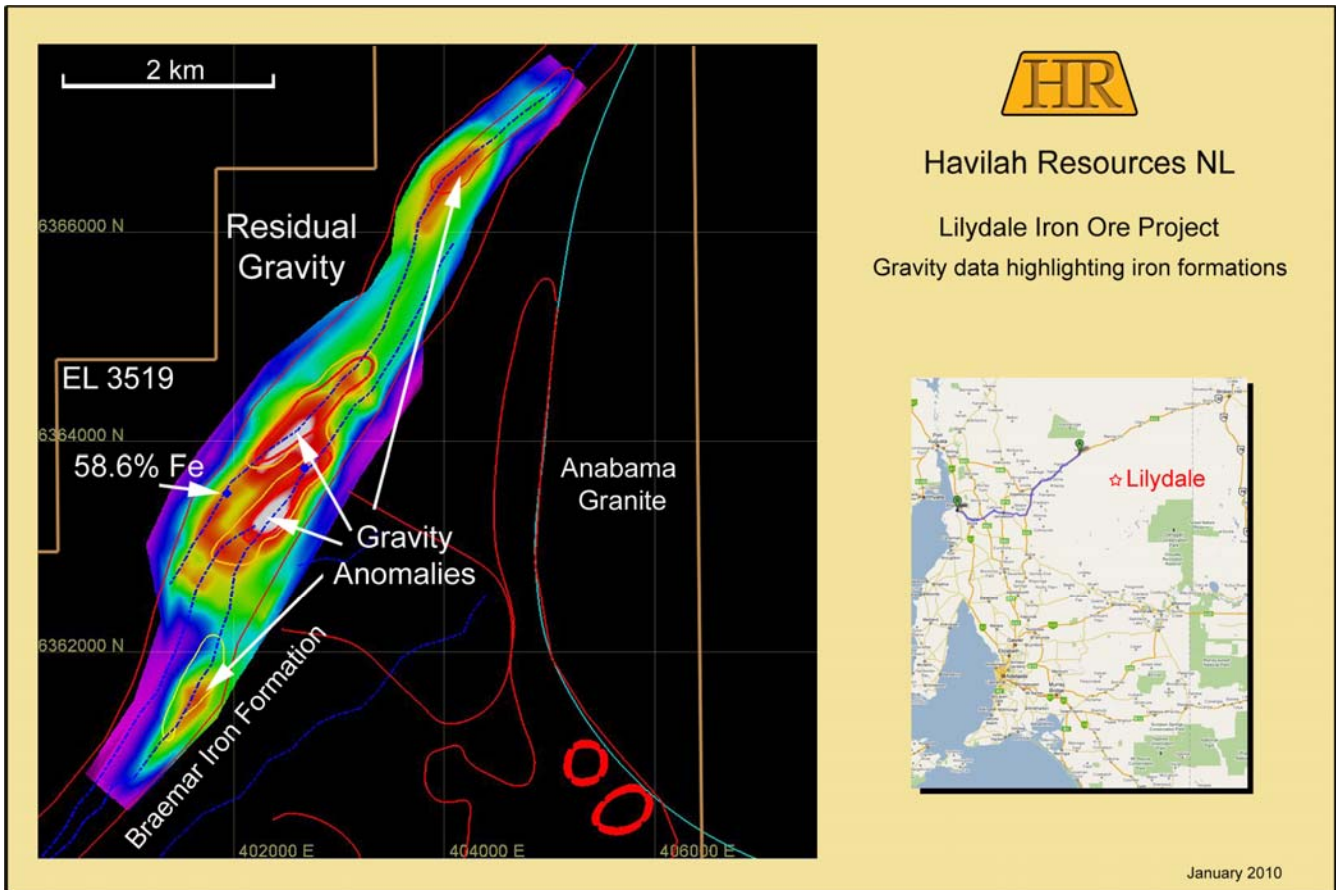
Dr Bob Johnson – Chairman
+ 61 (0)8 83389292

Lilydale Iron ore project

Following routine repairs and maintenance, the drilling rig has been mobilized to site to commence the 2010 drilling program. Drilling commenced yesterday at the Lilydale iron ore project, where up to ten shallow percussion (RC) holes are planned. These holes are designed to test the core of the large coincident gravity and magnetic anomaly associated with a poorly exposed portion of the Braemar Iron Formation.

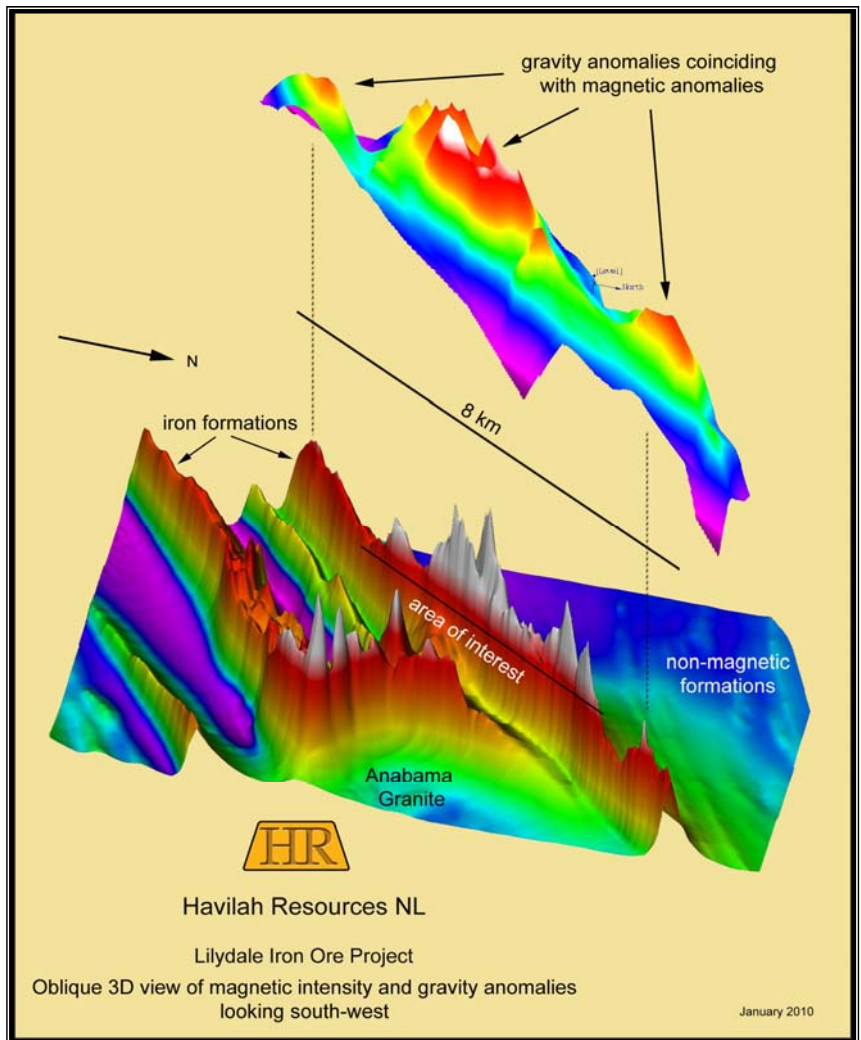
The first hole was collared on a low ironstone outcrop from which a surface sample containing 58.6% Fe was previously collected. The first hole intersected a 40 metre downhole width of iron-rich, magnetite - bearing material and remained in ironstone at the completion of drilling yesterday. Drill chip samples will be collected over metre intervals in each drillhole and composited for assay.

The Lilydale iron ore projects lies 50 km southeast of Yunta, which is located on the Transcontinental Railway, some 200 km east of Port Pirie. Aeromagnetic anomalies associated with magnetic ironstone indicate at least 20 km of strike of the Braemar Iron Formation lie within Havilah's 100% owned EL 3519.



The first drillhole is located at the position of the 58.6% Fe (iron) sample on the above image. Other drillholes will target the cores of the gravity anomalies where the highest ironstone concentrations are inferred to occur (white coloured zones).

The image at right shows the coincidence of magnetic and gravity anomalies, inferred to be caused by dense, magnetic ironstones in the subsurface.



For further information visit the Company website www.havilah-resources.com.au or contact :

Dr Bob Johnson, Chairman, on (08) 83389292 or email : info@havilah-resources.com.au

Competent Persons Statement

The information in this report has been prepared by geologists Dr Bob Johnson, who is a member of the Australasian Institute of Mining and Metallurgy, and Dr Chris Giles who is a member of The Australian Institute of Geoscientists. Drs Johnson and Giles are employed by the Company on consulting contracts. They have sufficient experience which is relevant to the style of mineralization and type of deposit under consideration to qualify as Competent Persons as defined in the JORC Code 2004. Drs Johnson and Giles consent to the release of the information compiled in this report in the form and context in which it appears.